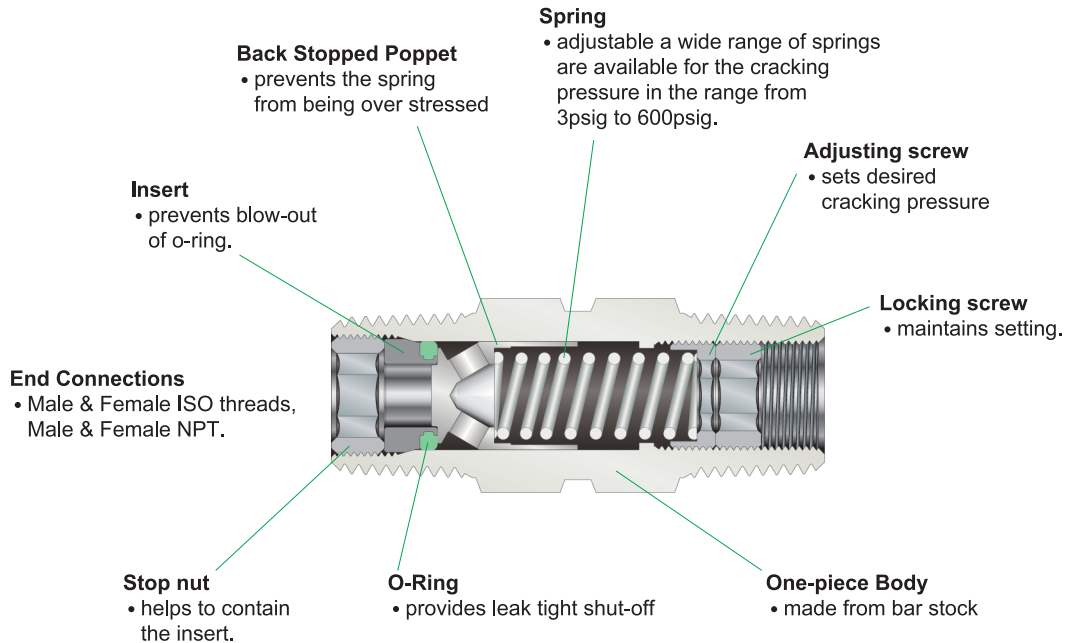


Hy-Lok CVA Series

One-piece Pipe-ended Adjustable Check Valves



Catalog No. H - 700ACV
Apr. 2006



Features

- Working pressure to 3000psig(206 bar) @70°F(21°C)
- Temperature range from -10°F to 375°F(-23°C to 191°C) with Viton Seal
- One piece body construction
- Ease of adjustment
- Wide range of cracking pressure
- Materials include stainless steel and brass.

Technical Data

End Connection Sizes	CVA - 4	CVA - 8
Max. Working Pressure @21°C (70°F)	3000 psig (206 bar)	
Operating Temperature Range	Viton : -10°F to 375°F (-23°C to 191°C) Buna-N : -10°F to 250°F (-23°C to 121°C)	
Cracking Pressure Range	3 to 50 psig 50 to 150 psig 150 to 350 psig 350 to 600 psig	
Flow Coefficient (Cv)	0.35	1.20



HY-LOK CORPORATION

©2006 HY-LOK CORPORATION All rights reserved

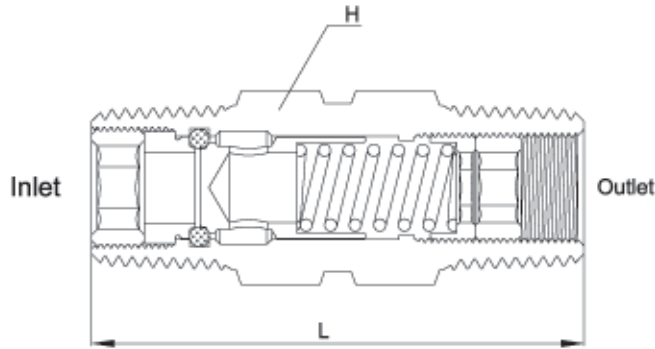
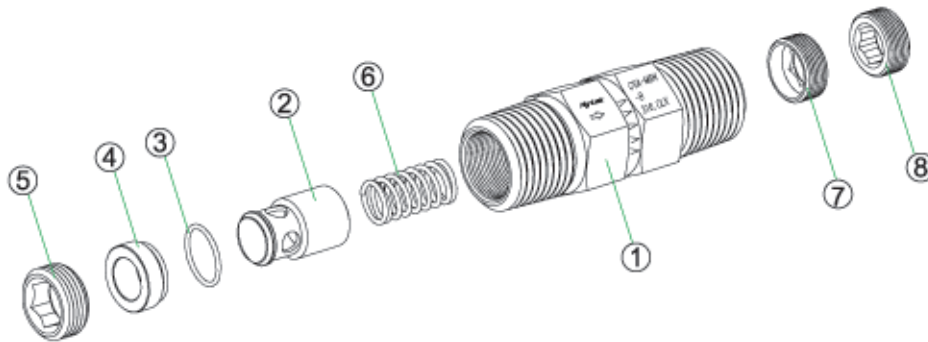


Table of Dimensions

Basic Part NO.		Flow Dia.	End Connections		Dimensions			
			Inlet	Outlet	L		H	
					mm	in.	mm	in.
CVA	-M4N	4.8	1/4 Male NPT	1/4 Male NPT	41.1	1.62	14.20	9/16
	-M4R		1/4 Male ISO Tapered	1/4 Male ISO Tapered				
	-F4N		1/4 Female NPT	1/4 Female NPT				
	-M8N	10.0	1/2 Male NPT	1/2 Male NPT	65.0	2.55	22.22	7/8
	-M8R		1/2 Male PT	1/2 Male PT				

■ All dimensions in millimeters. Dimensions are for reference only, subject to change.

Materials of Construction



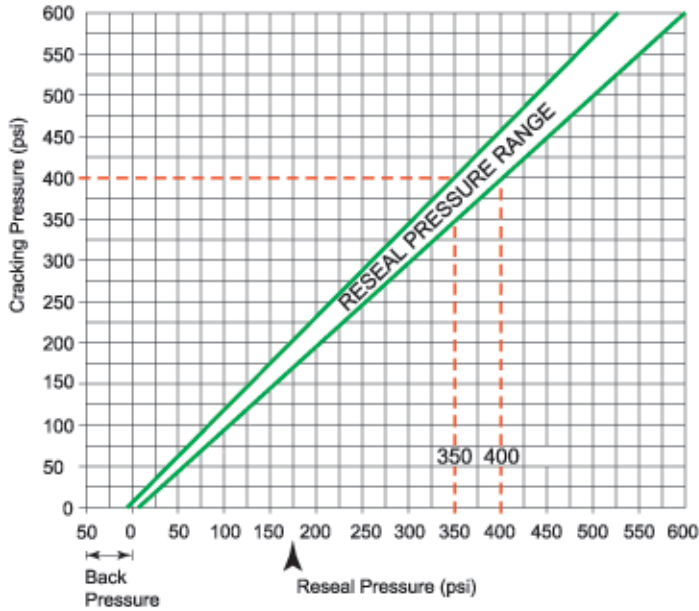
NO.	Component	Valve Body Materials	
		316 Stainless Steel	Brass
		Material Grade / ASTM Specification	
1	Body ^①	316SS / A479	Brass360 / B16
2	Poppet	316SS / A479	Brass360 / B16
3	O-ring ^①	Viton Standard	
4	Insert	316SS / A479	Brass360 / B16
5	Stop nut	316SS / A479	Brass360 / B16
6	Spring	302SS/A313	
7	Adjusting screw ^②	316SS / A479	Brass360 ^③ / B16
8	Locking screw ^②		

① Silicone-based lubricant.

② Molybdenum disulfide-based dry film lubricant.

③ Adjusting screw in brass valve with 150 or 350 psig spring is 316SS.

Cracking and Reseal Pressure at 70°F (20°C)



Example : For a valve set to crack at 400 psi, the minimum reseal pressure would be 350psi.

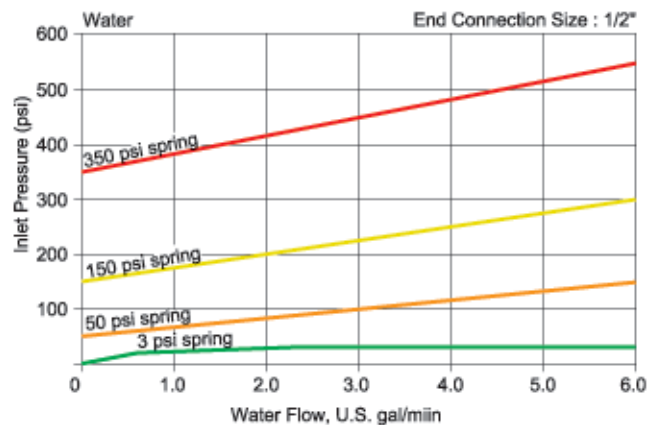
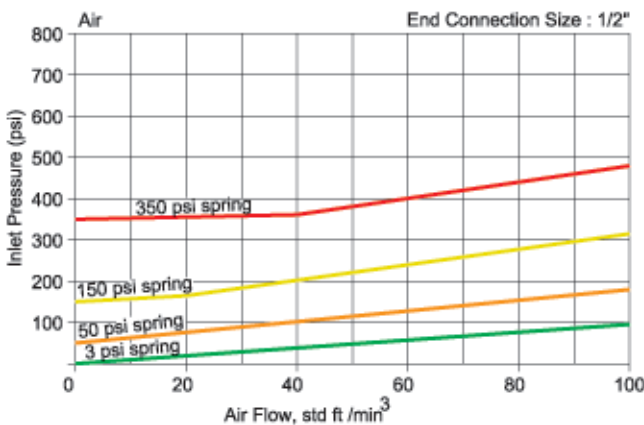
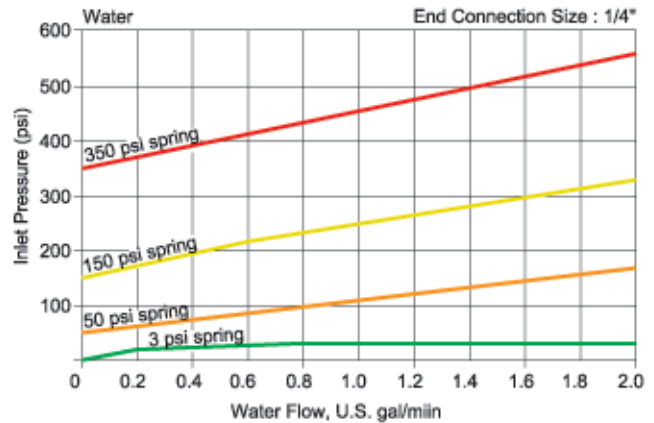
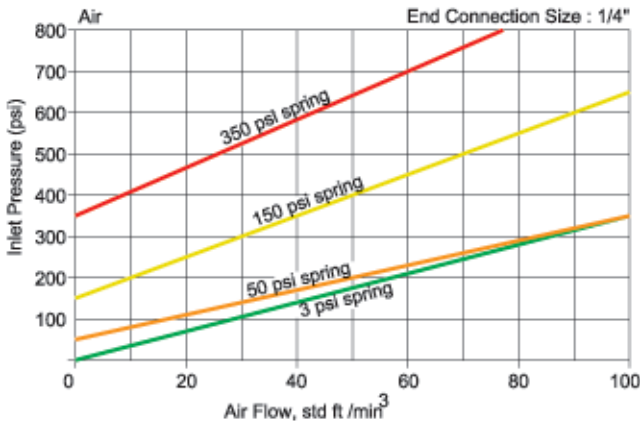


Valves that are not actuated for a period of time may crack initially at higher than subsequent cracking pressure.

CVA series check valves set to crack at 20psi or lower may require back pressure to reseal bubble-tight.

1. Cracking pressure : The upstream pressure at which the first indication of flow occurs.
2. Reseal pressure : The upstream pressure at which there is no indication of flow.

Flow Rate at 70°F (20°C)



Cleaning

- Each valve is cleaned and packaged according to the company's standard cleaning procedures.

Testing

- Each valve is factory tested for cracking pressure and reseal performance.
- Optional tests are available upon request.

Maintenance Kits

- Seal kits and spring kits are available for retrofit or maintenance
- For more information, contact your local authorized Hy-Lok Sales and Service Representative.

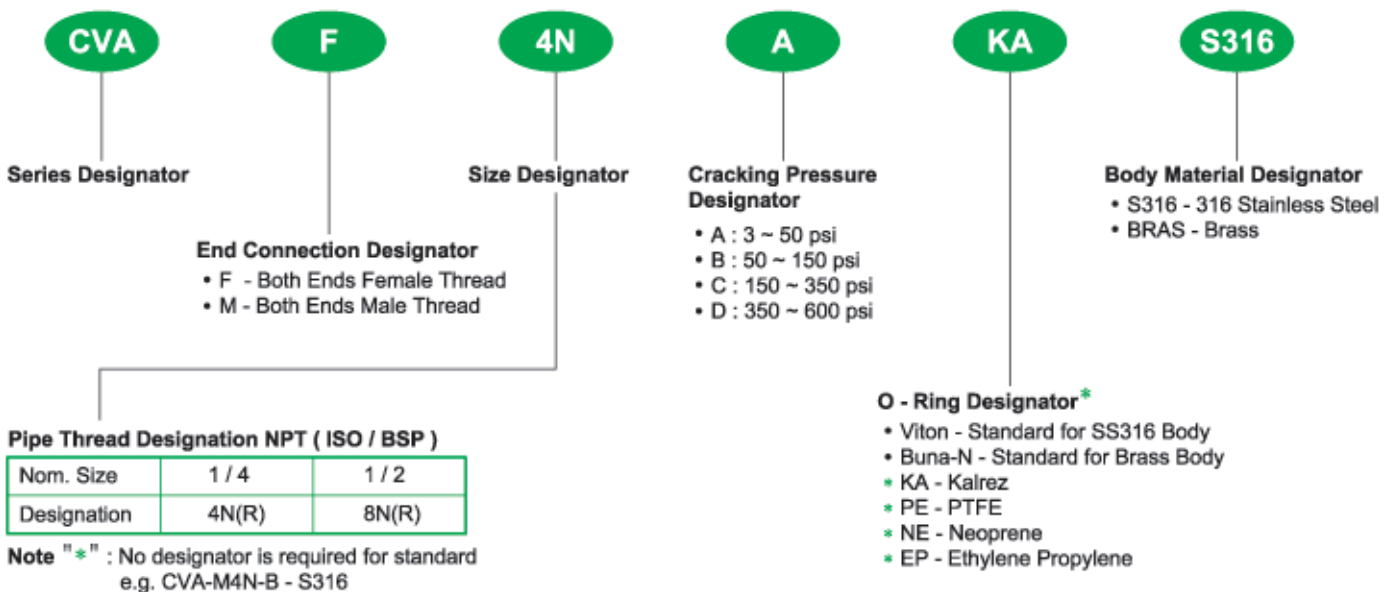
Seat Materials

Available are various O-ring materials, whose temperature ratings are shown below.

Material	Temperature Rating
Viton	-23°C to 191°C (-10°F to 375°F)
Buna - N	-23°C to 121°C (-10°F to 250°F)
Kalrez	-23°C to 315°C (-10°F to 600°F)
PTFE	-46°C to 232°C (-50°F to 450°F)
Neoprene	-40°C to 121°C (-40°F to 250°F)
Ethylene Propylene	-46°C to 149°C (-50°F to 300°F)

* High back pressure is required for PTFE to seal leak-tight.

Ordering Information



QUALITY SYSTEM CERTIFICATES



ISO 9001
CERTIFICATE NO. GQC 212

ASME SECT II (MO)
CERTIFICATE NO. QSC 584

TYPE APPROVALS (for Hy-Lok Tube Fittings)



American Bureau Shipping
CERTIFICATE NO. 00-BK50288-X



Lloyd's Register
CERTIFICATE NO. 01/10075



GERMANISCHER LLOYD
CERTIFICATE NO. 57798-91 HH



DET NORSKE VERITAS
CERTIFICATE NO. P-9100

SAFETY in VALVE SELECTION

Proper installation, material compatibility, operation and maintenance of the valve is the responsibility of the user. The total system design must be taken into consideration to ensure optimal performance and safety.



Distributed by :

www.hy-lok.com